

1 LITRE FLUID DISPENSER



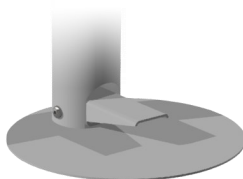
1 LITRE DISPENSER

KEY FEATURES

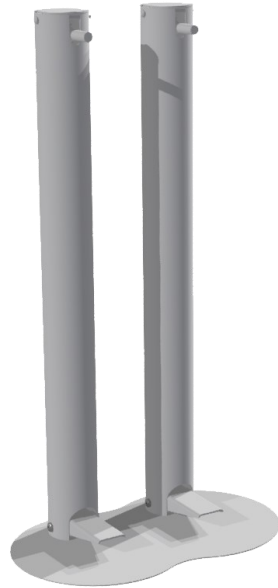
- Complete hygienic hands free operation
- Suitable for high use areas
- Internal or external use
- No power required, purely mechanical
- Easy viewable level window
- Optional secure lockable system
- Easy cleanable stainless steel

SPECIFICATION

- Manufactured from 304 Stainless steel
- 900mm high
- Accepts standard 1 litre containers
- Manufactured in the UK
- Full 2 year warranty



FOOT OPERATED



TWIN DISPENSER AVAILABLE



1 LITRE REPLACABLE CONTAINERS

DESCRIPTION

A robust foot-operated stainless steel 1 litre fluid dispenser. Suitable to dispense all types of fluids including hand sanitiser and creams, twin dispenser available where the cream is required after sanitiser.

Ideal for high use areas, manufactured from 304 stainless steel making it suitable for internal / external usage. No power source required.

Foot-operated enabling the user a completely hands-free hygienic operation.

A simple viewing slot allows for fluid level check, takes seconds to quickly and easily replace containers via an optional lockable pin. Floor mounting kit for permanent fixing available.

PRODUCT NUMBERS

Model	Height	Capacity	Weight	Part No
FD1	900mm	1 Litre	14KG	FD1900
FD1x2	900mm	2 x 1 Litre	27KG	FPD900x2

ADDITIONS (add suffix) For example - FD1900 + FL

FL (Floor mounting kit)

DIMENSIONS

