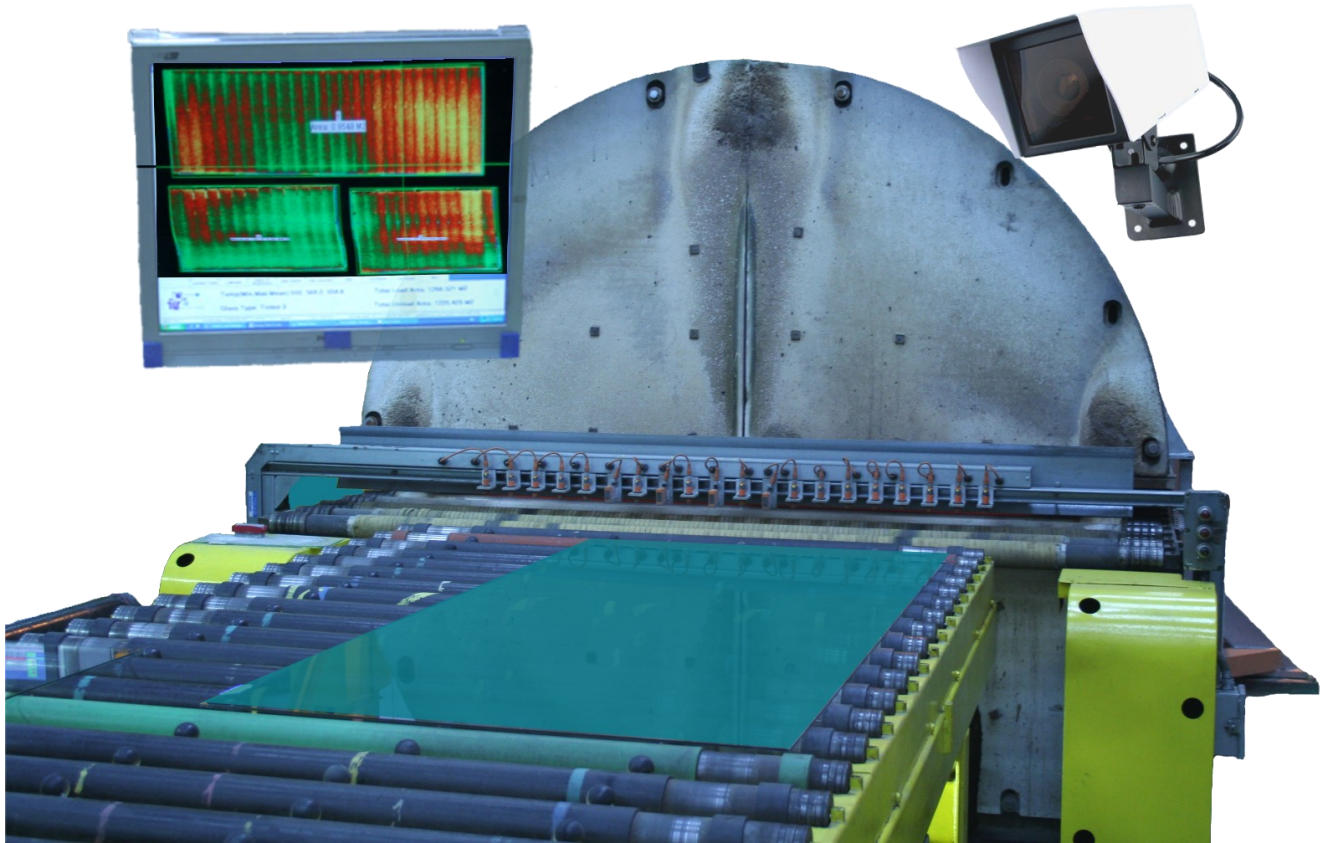


## Intelligent Vision Inspection System (Thermal)

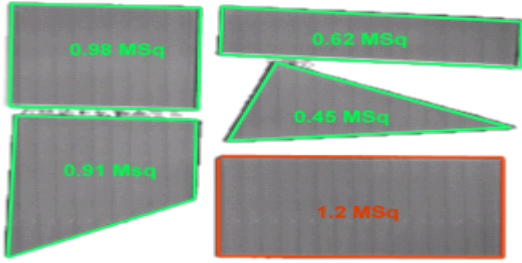


**A complete thermal system that identifies and displays the precise location and size of defects from as small as 0.5 mm<sup>2</sup> in any flat surface. Glass, steel, plastics, print,**

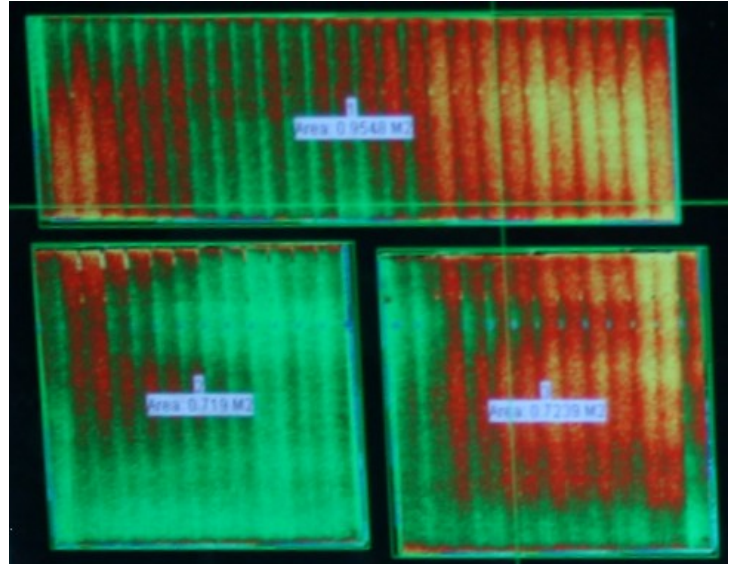
### **Saving and Benefits**

- ▣ Immediate return on investment
- ▣ Highlights temperature gradients and trends
- ▣ Rapid visual detection of temperature hot spots & non-uniformities
- ▣ Dynamically adapts to materials with differing emissivity and transmission coefficients
- ▣ Easy to operate
- ▣ Reduction in energy
- ▣ Reduce waste products
- ▣ Accommodates shape and orientation

### Example Image of Bed Load



### Example of Thermal Image



### Management Information

- ▣ Production activity reports provided hourly, daily and weekly
- ▣ Detailed reports of bed loads length width & area
- ▣ Detailed reports of losses in bed loads
- ▣ Traceable record of individual scanned panels
- ▣ Ability to access management and individual customer record from archived data
- ▣ Archived inspection results available to external network
- ▣ Archives use SQL/ Access relational database

### System Features

- ▣ Compact System design with thermal shielding
- ▣ Easily integrated into new and existing product lines
- ▣ Low maintenance requirements
- ▣ Proven reliable performance
- ▣ Display of data on exit of Oven or Quench

### Thermal Performance

- ▣ Thermal sensor measures across the bed in single scan
- ▣ Ability to increase production speeds
- ▣ Simple to use colour palette
- ▣ Visual indication of panels status enables the operator to take corrective action
- ▣ Sensitive to changes in temperature
- ▣ Traceable record of individual scanned panels

Specification	
• Delivery Speed	10 - 63 meter/min
• Continuous Panel inspection size	7.0 x 4.0 meter
• System inspection resolution	0.5mm <sup>2</sup> (typically)
• Scan speed	2000 lines per second @ 1600 measurement points
• Measurement accuracy	1% or +/- 2 mm which ever the greater (typically)
• Area accuracy	> 0.5%
• Thermal Accuracy	+ /- 5 degrees
• Option Thermal Accuracy <sup>note 1</sup>	1% or +/- 1 degrees which ever is the greater
• Power supply	110 240 volt @ 6A

(Note 1) The system accommodates the Raytex range of thermal imaging scanners for greater thermal accuracy & resolution as required.

We would be happy to discuss your individual requirements and answer any questions you may have